

Peninsula Bridge Connections

dream • believe • achieve

Volume 6, Issue 2

Fall 2009

Upcoming Events

Peninsula Bridge Sixth Annual Benefit Breakfast

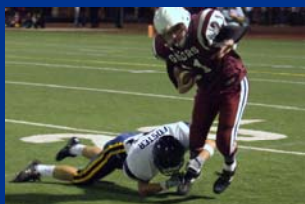


“Passport to Success”

Thursday, October 22, 2009
7:30am to 8:30am

Sharon Heights Golf and
Country Club
Menlo Park

If you would like to attend, volunteer or participate as a Table Host, please contact
Sherri Shaner
408-358-8805,
sherri@peninsulabridge.org



Seventh Annual Valparaiso Bowl

Menlo vs. Sacred Heart
Saturday, November 14th
Woodside High School
JV 4pm
Varsity 7pm

Come watch these Bridge partner schools play in this rival game and support Bridge at the same time.

All gate proceeds benefit Peninsula Bridge.

TA Bloggers—An inside look at our summer program

Want to get an idea of what happened at Peninsula Bridge this summer? Check out the TA Blog on the Peninsula Bridge website. Teacher Assistants (TAs) from every site contributed insightful, reflective, informative, and humorous accounts of what students were doing during their five weeks with Bridge. The TAs captured the spirit of everyone involved and gave us the opportunity to see the impact of our program through their perspective. Below is a partial blog post by Mariel, a TA at the Castilleja Bridge program:



Castilleja students at the Asian Art Museum

This week has been loads of fun, but Bridge is passing by too quickly! We TAs have noted we wish time would slow down a little bit!

Thursday we paid a visit to the Asian Art Museum, which was incredible. Kids were fascinated by the stone Buddhas and the intricately decorated dishes in the museum. The majority of the students declared that the Samurai section of the museum was the best part, as well as the exhibit where students could wear Samurai armor or a kimono. One student offered facetiously that her favorite part was the glass elevator which looked over a large portion of the museum. (to read the rest of this excerpt and more TA blog entries go to www.peninsulabridge.org)

Growth and Quality by Grainger Marburg, Executive Director



We opened our seventh program site this summer (see article on St. Matthew's), enabling us to host 270 motivated middle school students from East Palo Alto, Menlo Park, Redwood City, and San Mateo. While we are now supporting 30% more students than we were in 2007, our commitment to quality programming and individualized attention hasn't changed. We maintained a 5:1 or better student to teacher ratio (including TAs) at all of our sites, and had one of the most talented and competent cadre of site directors, teachers, and TAs the organization has had in its history.

Quality instruction produced impressive results, with 98% and 86%

of our students making big gains in math and language arts, respectively. This is a very challenging time for our public school partners, and our program is more critical than ever in combating summer learning loss and the achievement gap in our target local communities. Our recent growth means we can support more deserving students and increase their opportunities for personal and academic success. It's definitely a group effort, though, and each of us on the education continuum (schools, parents, after school and summer programs, students, funders, etc.) must do our part to ensure quality education for all students. Everyone wins when students succeed.

The Peninsula Bridge Program

Mailing address:
P.O. Box 963
Menlo Park, CA 94026

Office address:
457 Kingsley Ave.
Palo Alto, CA 94301

Phone: 650-473-9461
Fax: 650-473-6091
E-mail:
info@peninsulabridge.org

Sign up for our eNewsletter
at www.peninsulabridge.org

Our Annual Report for
2008 is now available at
www.peninsulabridge.org
under About Us

dream • believe • achieve

The mission of Peninsula Bridge is to promote academic and personal success for middle school students from under-resourced communities.

Expanding to St. Matthew's

The economic climate doesn't change what kids need to grow and thrive. Boom or bust, kids need a safe and challenging environment during the summer to make sure they don't lose vital academic ground. Peninsula Bridge understands our program is more critical now than ever, and we were thrilled to open a new program site (our second in as many years) at St. Matthew's Episcopal in San Mateo this past summer. Our expansion enabled us to support 30 additional students (rising 5th and 6th graders) from the San Mateo-Foster City School District.



New Bridge Students

The new partnership has been exciting for all involved: "[St. Matthews's] is very pleased to be serving as a host site this summer, helping Bridge expand its reach into San Mateo and Foster City," says Mark McKee, Head of School at St. Matthew's. "Our partnership is a good find, as we both share the values of academic excellence and service." Grainger Marburg, Bridge's executive director, enthusiastically concurs, adding, "St. Matthew's is a great fit for us. They strongly support our mission, and their commitment to our success makes our work much easier. We are honored to be a partner."

Thank you for your support from a Peninsula Bridge Student!



Briana is a 5th grader who attended this summer's Bridge program at St. Matthew's. Below, find excerpts of the card she made to thank Bridge supporters!

Dear Friend of Peninsula Bridge,

I just want to say how much I appreciate all that you have done for us this summer. I have really enjoyed being here, and I can't wait to come back next summer. I enjoyed playing sports with the TAs and learning language arts and math. One day I hope to be a singer, and I think this program will really help me in the future. Thanks for helping us out and cheering us on in this wonderful program.

Sincerely,
Briana



Many thanks to the foundations and corporations who have joined us in supporting our programs this year:

All Stars Helping Kids, Borel Private Bank and Trust, Comerica Bank, David and Lucille Packard Foundation, eBay Foundation, Koret Foundation, Lockheed Martin Missiles and Space Company, Maple Hill Foundation, Morgan Family Foundation, Sand Hill Foundation, SanDisk Corporation, Silicon Valley Community Foundation, Sobrato Foundation, Symantec Corporation, TOSA Foundation